

Vision TC2 HDMITP HDMI-over-Twisted Pair

- > Transmits HDMI signal over CAT5e cable up to 30m / 98.4 ft (CAT6 50m / 164 ft)
- > Supports 1080P (1920 x 1080) and 3D (60Hz)
- > Power adaptors required at both ends



VISION
installation-innovation



Vision's "Techconnect Twist" products allow a variety of signals to be transmitted long distances over standard unshielded CAT5e and CAT6 cable. Sold as a transmitter and receiver set, the 'TC2 HDMITP' enables use of inexpensive and flexible UTP (unshielded twisted pair) cable to route HDMI signal from a computer to a display device.

Faster Installation

Installers can take advantage in buildings which have been flood-wired with network cable. Where a CAT5 cable is already in place the installation is super-fast.

Techconnect Module

The transmitter presents as an ordinary Techconnect HDMI module from the front, allowing tidy clip-in installation. The circuit on rear of the module is packed with technology.

HD Resolution

The HDMITP supports resolutions up to 1080P (1920 x 1080) at 60 frames per second. It also supports 3D at 60Hz.

Cable Length

With a 1920 x 1080 resolution signal the CAT5e cable can be up to 30m (98.4 ft) long. CAT6 cable takes this maximum recommended length up to 50m (164 ft). With common 1280 x 800 resolution the cables can be longer because of the reduced bandwidth required: 50m (164 ft) on CAT5e cable, and 60m (196.9 ft) on CAT6 cable.

Dual Power

Two power supplies are included – one for the transmitter, and one for the receiver. The complex HDMI signal uses all four pairs of wires inside the CAT5e and CAT6 cables, so it is not possible to also carry power over the cable.

HDCP Support

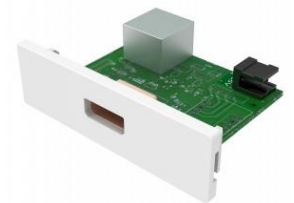
Version 1.2 of HDCP (High-bandwidth Digital Content Protection) is supported. HDCP authentication is the technology developed by Intel that prevents copying of digital content as it passes through cables.

EDID

EDID handshake is supported, which allows the source device to output the native display resolution. A reset button on the transmitter can be pressed to capture information from the display if the display is changed.

Easier to work with

Compared to long HDMI cables ethernet cable is easier to work with; it has a tighter bend-radius, is thinner, easier to pull, and simple to terminate



Full

TECHNICAL SPECIFICATIONS

TRANSMITTER DIMENSIONS:	71 x 21 x 48 mm / 2.8" x 0.8" x 1.9" (length x width x height)
RECEIVER DIMENSIONS:	82 x 44 x 24 mm / 3.2" x 1.7" x 0.9" (length x width x height)
PACKAGED DIMENSIONS:	165 x 145 x 95 mm / 6.5" x 5.7" x 3.7"
PRODUCT WEIGHT:	123g / 0.27 lb per set
PACKAGED WEIGHT:	0.7 kg / 1.54 lb per set
RECOMMENDED MAXIMUM CABLE LENGTH:	CAT5e: 1280 x 1024: 50m / 1600 x 1200: 40m / 1920 x 1080: 30m CAT6: 1280 x 1024: 60m / 1600 x 1200: 55m / 1920 x 1080: 50m
CONSTRUCTION MATERIAL:	Plastic/ Metal
COLOUR:	White
TECHNICAL DETAILS	Video Amplifier Bandwidth: 6.75Gbps (2.25Gbps/TDMS Channel) Input Video Signal: 0.5-1.5 volts p-p Input DDC Signal: 5 volts p-p (TTL) Maximum Video Format Supported: 1920x1200 / 1080P Output Video: HDMI 1.3, 3D @ 60Hz Operating Temperature Range: -15 to +55°C Operating Humidity Range: 5 to 90 % RH (no condensation) Maximum operation current: 800mA
POWER SUPPLY:	100-240v 50/60Hz AC 5 volt / 2 amp Transformer integrated into plug. Includes interchangeable plugs: UK/EU/US/AU. DC tail length: 4m / 13.1 ft. Transformer dimensions: 66 x 43 x 32mm / 2.6" x 1.7" x 1.3"
WARRANTY:	2-year return to base
COMPLIANCES:	RoHS, WEEE, CE, and CB compliant.
ORDER PART CODE:	TC2 HDMITP [SAP:2781382]
SPARE POWER SUPPLY UNIT (PSU)	TC2 P5V2A [SAP:2940996]